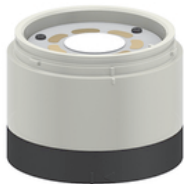
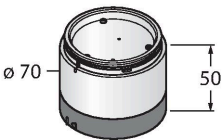


# SG-TL70-DXN2

## LED Signal Light – Modular Signal Tower

### Wireless Segment



#### Technical data

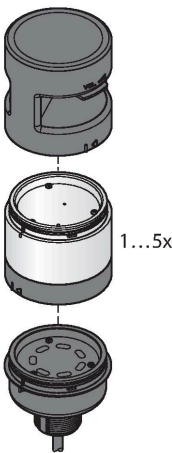
|                                  |                               |
|----------------------------------|-------------------------------|
| Type                             | SG-TL70-DXN2                  |
| ID                               | 3803750                       |
| Signal and display data          |                               |
| Purpose                          | LED indicator light           |
| Function                         | Tower light                   |
| Dimmable                         | No                            |
| Electrical data                  |                               |
| Operating voltage $U_B$          | 12...30 VDC                   |
| DC rated operating current $I_o$ | $\leq 30$ mA                  |
| Response time typical            | $< 180$ ms                    |
| Mechanical data                  |                               |
| Cascadable                       | No                            |
| Design                           | Smooth barrel, TL70           |
| Dimensions                       | $\varnothing 70 \times 50$ mm |
| Housing material                 | Plastic, PC, Black            |
| Window material                  | Polycarbonate, diffuse        |
| Ambient temperature              | $-40...+50$ °C                |
| Relative humidity                | 0...95 %                      |
| Protection class                 | IP65                          |
| Tests/approvals                  |                               |
| Approvals                        | CE, UL listed                 |

#### Features





- Plastic housing, black
- Protection class IP65 (mounted)
- Operating voltage: 12...30 VDC
- Inputs: 6 PNP/NPN by radio, 32-bit event counter
- Outputs: 6 PNP/NPN by radio
- Non-illuminated, controls up to six other TL70 segments
- Reports the status of the other segments to the gateway
- 2.4 GHz frequency band
- Integrated antenna
- Range: 1000m
- Frequency hopping FHSS
- Time Division Multiplex Access (TDMA)
- Transmission power: 63 mW, 18 dBm conducted, 20 dBm EIRP

#### Functional principle

This rugged modular multifunction display is available in many variations and is easily mounted. Each signal tower can be assembled from a maximum of five color segments and, optionally, a beeper. All segments are configurable via DIP switches. Five colors are available, blue (B), green (G), red (R), yellow (Y) and white (W), and these can be used in any combination. The arrangement of the segments can be modified subsequently and more lights can also be added. The respective port is selected via the basic module. The wiring diagram shows a PNP pin assignment.



Accessories

| Dimension drawing   | Type      | ID      |   |
|---|-----------|---------|---|
|    | B-TL70-5  | 3092223 | TL70 base module, black, cable, 5-pin, 2 m, connection of 4 segments possible         |
|  | B-TL70-8  | 3092224 | TL70 base module, black, cable, 8-pin, 2 m, connection of 6 segments possible         |
|  | B-TL70-Q5 | 3092226 | TL70 base module, black, connector, 5-pin, M12 x 1, connection of 4 segments possible |
|  | B-TL70-Q8 | 3092227 | TL70 base module, black, connector, 8-pin, M12 x 1, connection of 6 segments possible |