

Your Global Automation Partner



# TBEN-L|TBEN-S

## Bootloader Update

Technical Support Document



# Table of Contents

1	About These Instructions .....	5
1.1	Target groups.....	5
1.2	Explanation of symbols used .....	5
1.3	Other documents .....	5
1.4	Feedback about these instructions.....	5
2	Carrying out the bootloader update (FDT/DTM).....	6
2.1	Checking the bootloader version.....	6
2.2	Updating the bootloader .....	7



# 1 About These Instructions

These instructions describe the bootloader update for block I/O modules of the TBEN-S and TBEN-L product families via FDT/DTM. Read these instructions carefully before updating the bootloader. This is to avoid possible damage to property. Retain the instructions for future use during the service life of the product. If the product is passed on, pass on these instructions as well.

## 1.1 Target groups

These instructions are aimed at qualified personal and must be carefully read by anyone operating and maintaining the device.

## 1.2 Explanation of symbols used

The following symbols are used in these instructions:



### **DANGER**

DANGER indicates a dangerous situation with high risk of death or severe injury if not avoided.



### **WARNING**

WARNING indicates a dangerous situation with medium risk of death or severe injury if not avoided.



### **CAUTION**

CAUTION indicates a dangerous situation of medium risk which may result in minor or moderate injury if not avoided.



### **NOTICE**

NOTICE indicates a situation which may lead to property damage if not avoided.



### **NOTE**

NOTE indicates tips, recommendations and useful information on specific actions and facts. The notes simplify your work and help you to avoid additional work.



### **CALL TO ACTION**

This symbol denotes actions that the user must carry out.



### **RESULTS OF ACTION**

This symbol denotes relevant results of actions.

## 1.3 Other documents

Besides this document the following material can be found on the Internet at [www.turck.com](http://www.turck.com):

- Data sheet
- Instructions for use
- EU Declaration of Conformity (current version)
- Approvals

## 1.4 Feedback about these instructions

We make every effort to ensure that these instructions are as informative and as clear as possible. If you have any suggestions for improving the design or if some information is missing in the document, please send your suggestions to [techdoc@turck.com](mailto:techdoc@turck.com).

## 2 Carrying out the bootloader update (FDT/DTM)

### 2.1 Checking the bootloader version

- ▶ Open the web server via a web browser or via the Turck Service Tool.
- ▶ Check the current bootloader version in the station information on the start page.

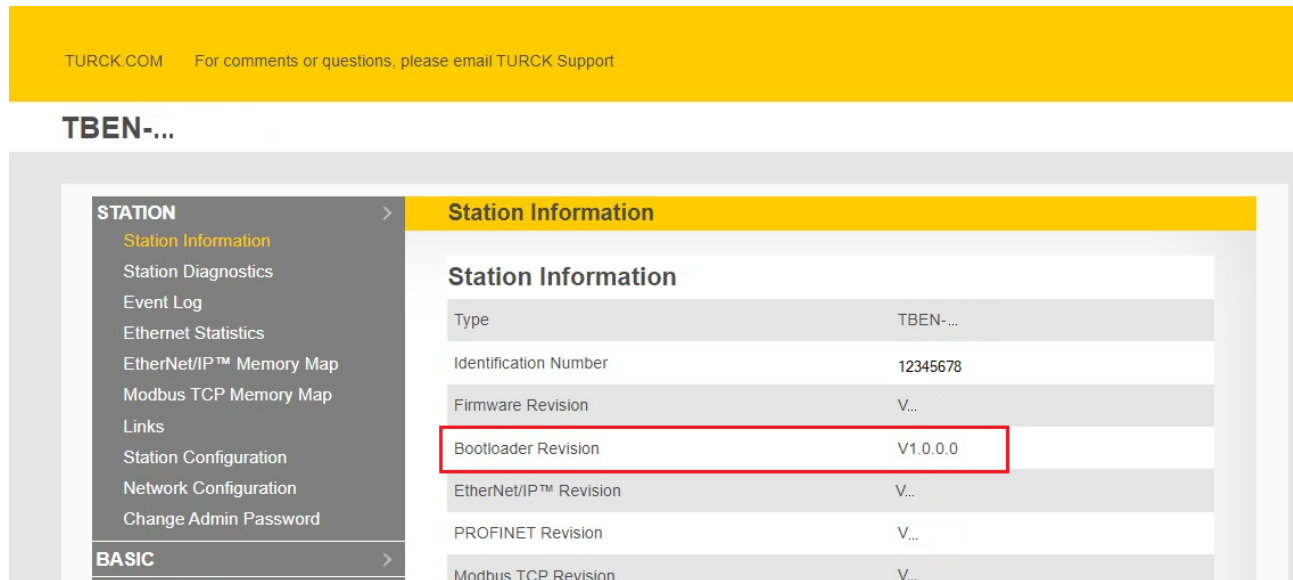


Fig. 1: Web server– Checking the bootloader version.

## 2.2 Updating the bootloader



### NOTICE

Interruption of the power supply during the bootloader update

#### Risk of device damage due to faulty bootloader update

- ▶ Do not interrupt the power supply during the bootloader update.
- ▶ During the the bootloader update do not reset the power supply.

- ▶ Click the **Firmware Download** button.
- ▶ Select the displayed bootloader and click **Open**.

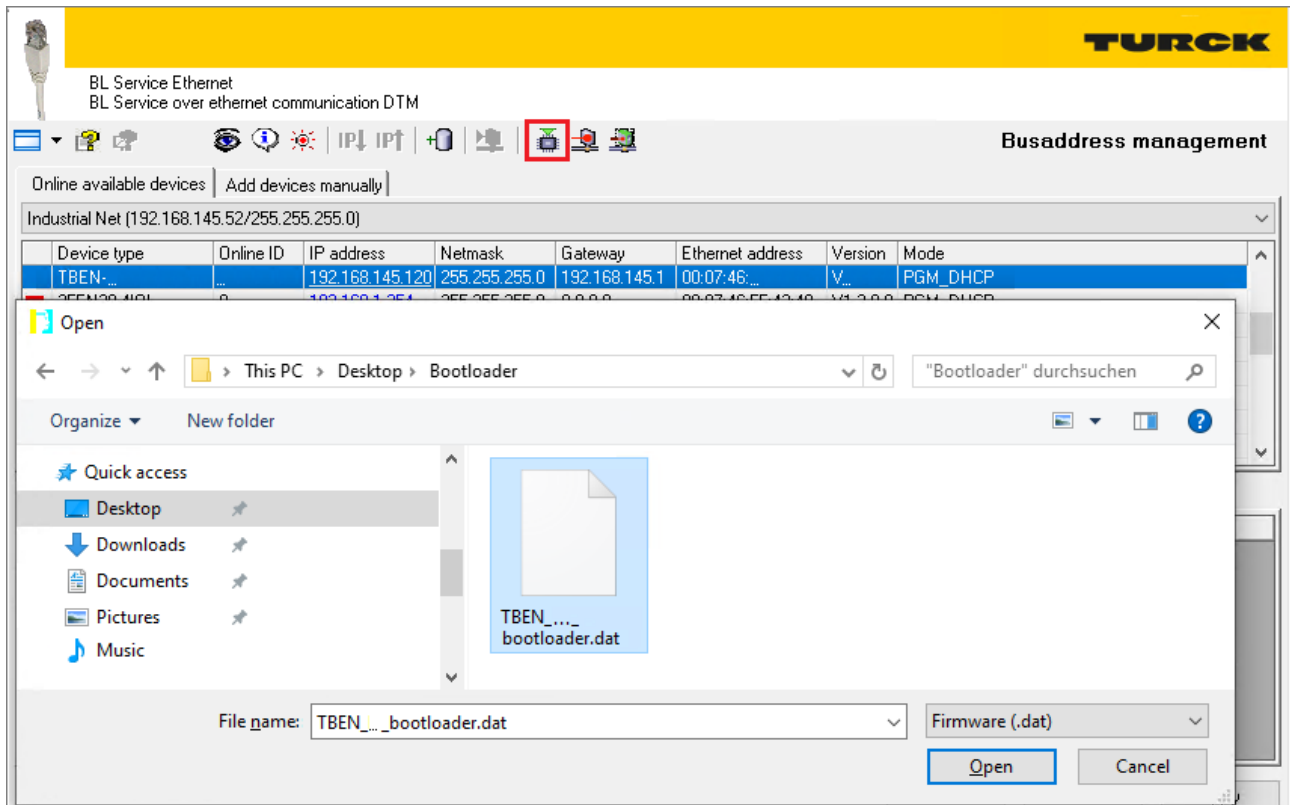


Fig. 2: PACTware – Selecting the bootloader

- ⇒ PACTware displays a green bar at the bottom of the screen to indicate the progress of the bootloader update.
- ⇒ The bootloader was updated.

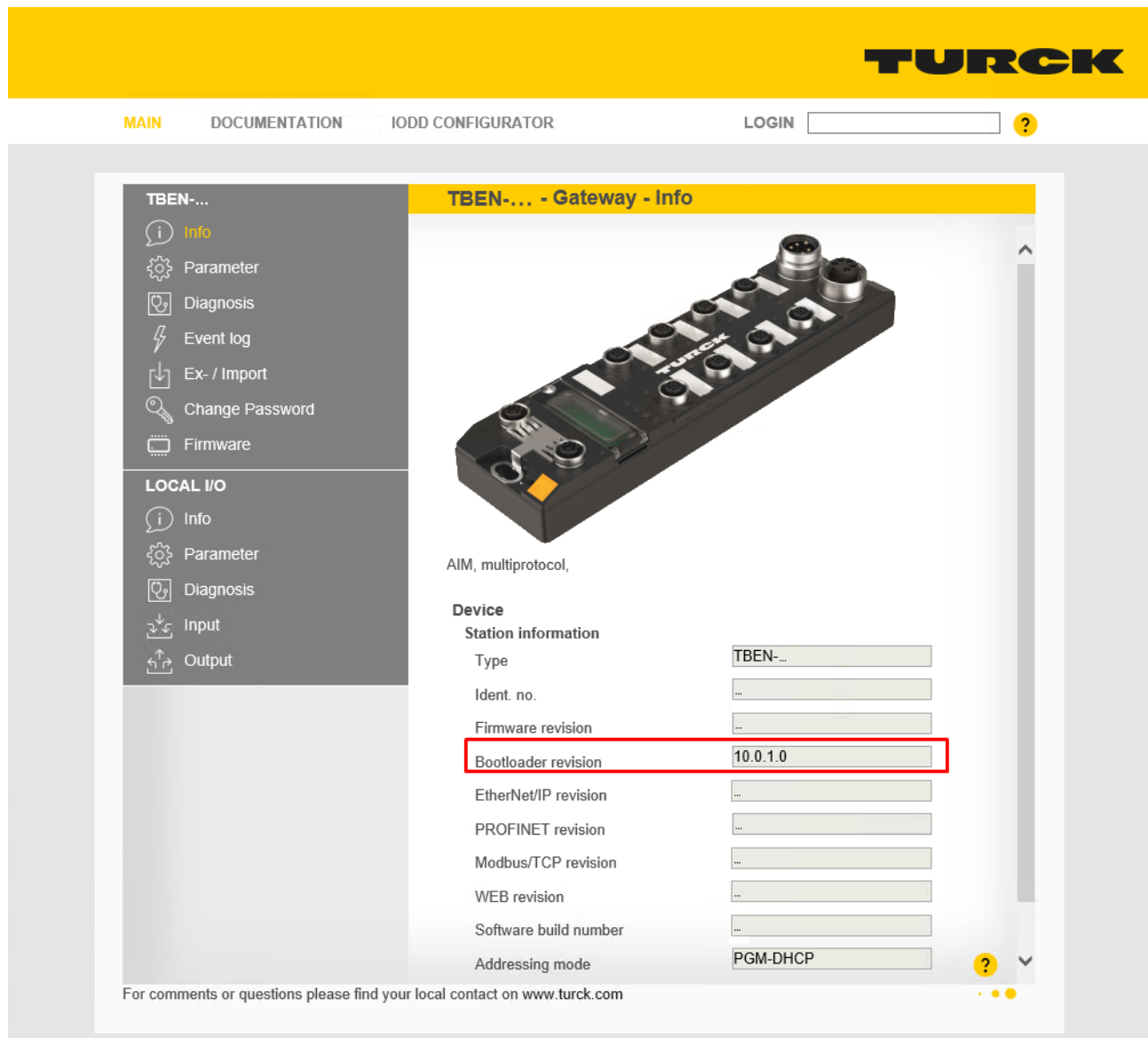


Fig. 3: Web server – New bootloader



# TURCK

Over 30 subsidiaries and over  
60 representations worldwide!

100032630 | 2021/09



[www.turck.com](http://www.turck.com)